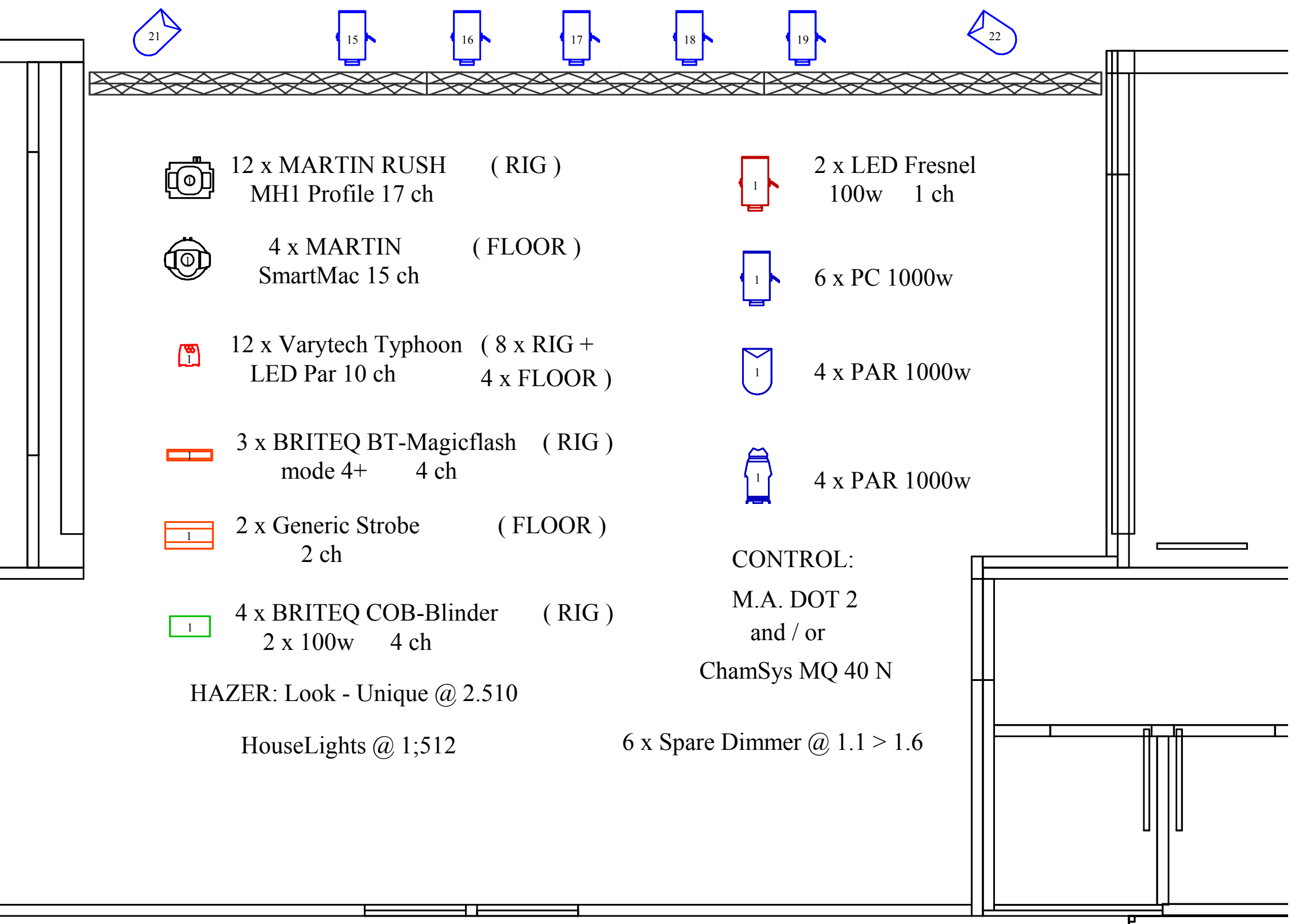
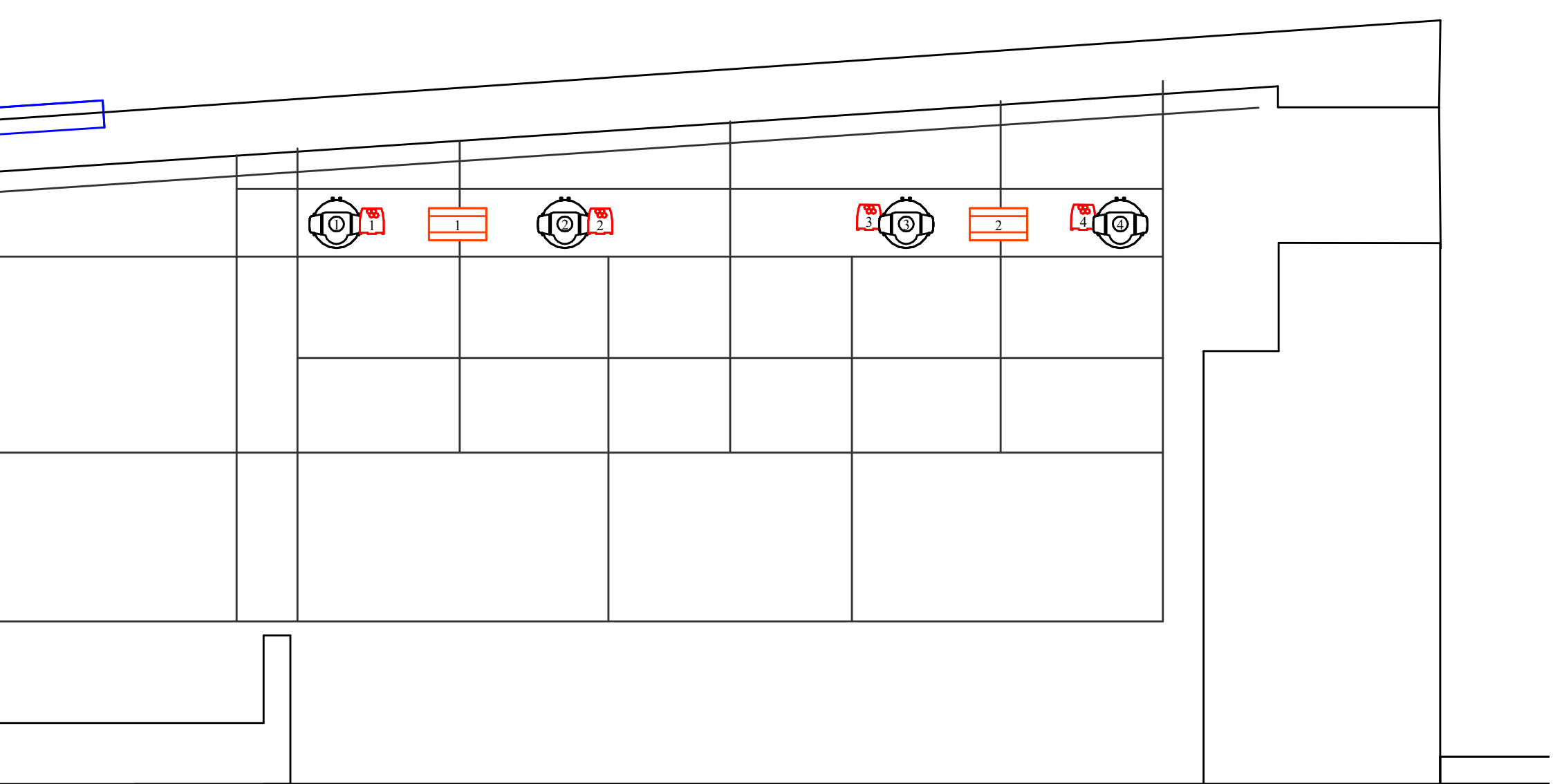


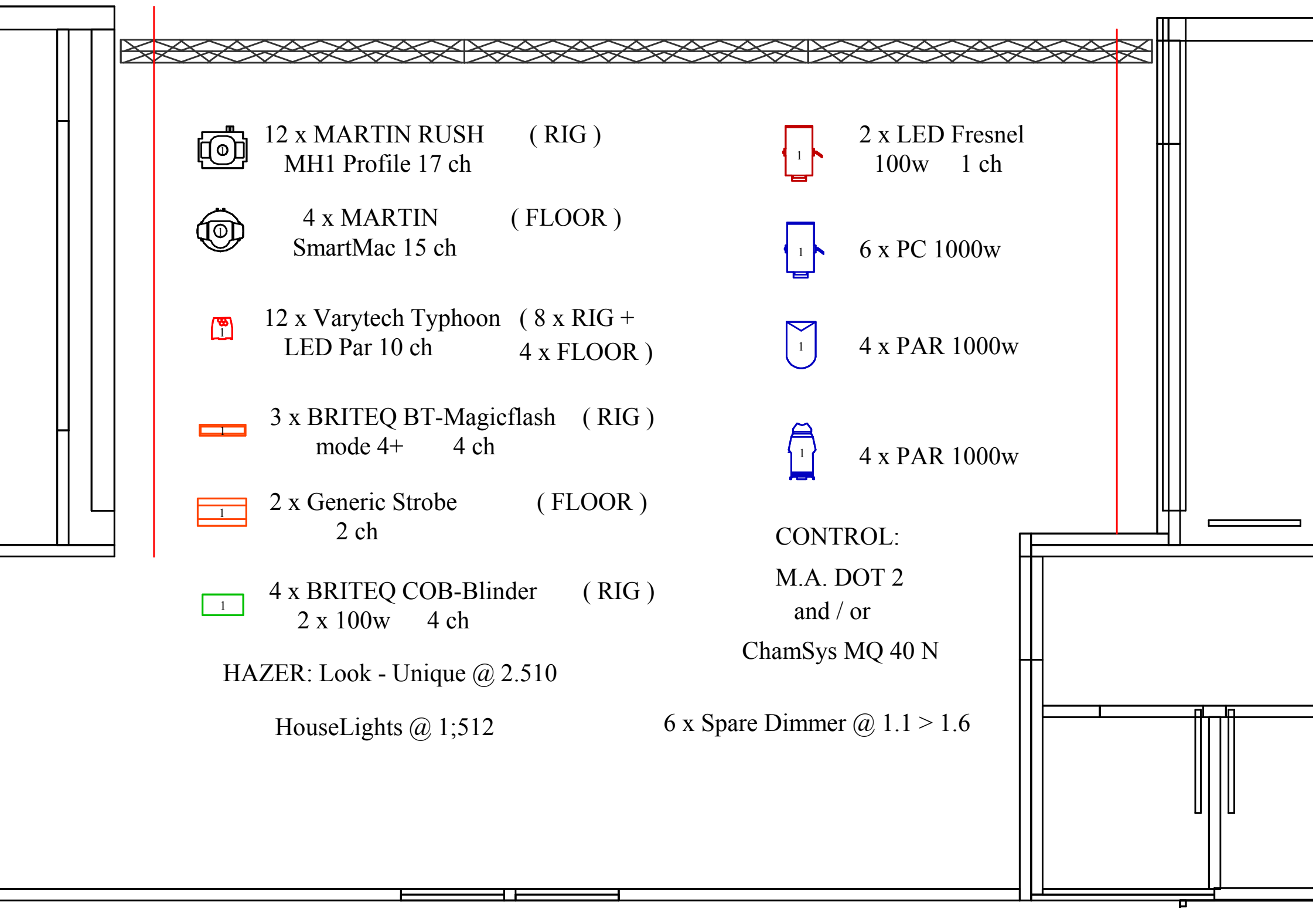
## LAITERIE Lights - CLUB - Strasbourg





# LAITERIE Lights - CLUB - Strasbourg

## FLOOR



12 x MARTIN RUSH (RIG)  
MH1 Profile 17 ch



4 x MARTIN (FLOOR)  
SmartMac 15 ch



12 x Varytech Typhoon (8 x RIG +  
LED Par 10 ch 4 x FLOOR)



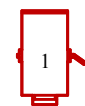
3 x BRITEQ BT-Magicflash (RIG)  
mode 4+ 4 ch



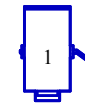
2 x Generic Strobe (FLOOR)  
2 ch



4 x BRITEQ COB-Blinder (RIG)  
2 x 100w 4 ch



2 x LED Fresnel  
100w 1 ch



6 x PC 1000w



4 x PAR 1000w



4 x PAR 1000w

CONTROL:

M.A. DOT 2  
and / or

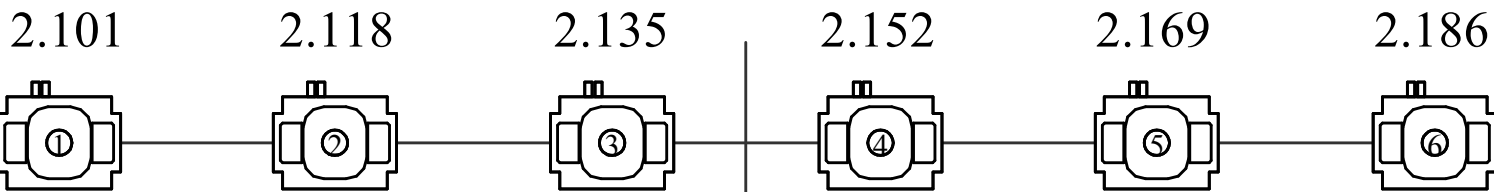
ChamSys MQ 40 N

HAZER: Look - Unique @ 2.510

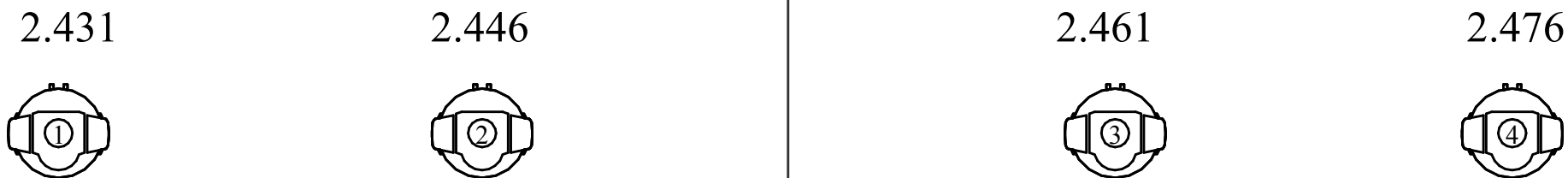
HouseLights @ 1;512

6 x Spare Dimmer @ 1.1 > 1.6

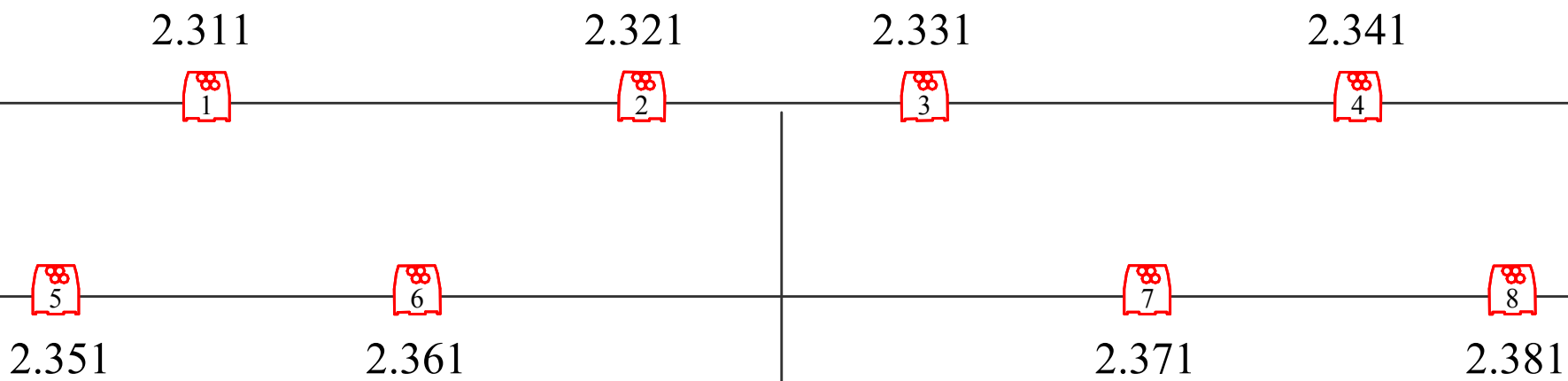
12 x MARTIN RUSH MH1 Profile 17 ch (RIG)



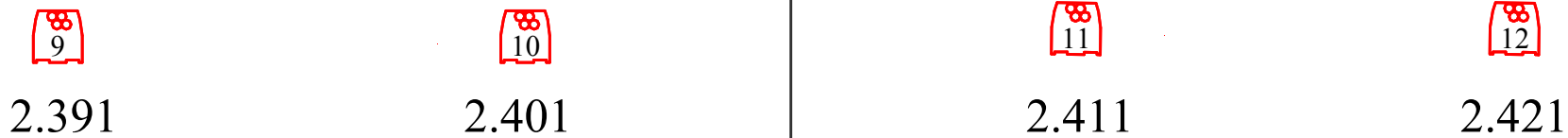
4 x MARTIN SmartMac 15 ch (FLOOR)



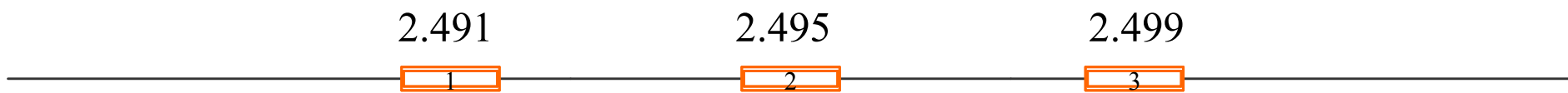
12 x Varytech Typhoon LED Par 10 ch 8 x RIG



4 x FLOOR



3 x BRITEQ BT-Magicflash mode 4+ 4 ch (RIG)

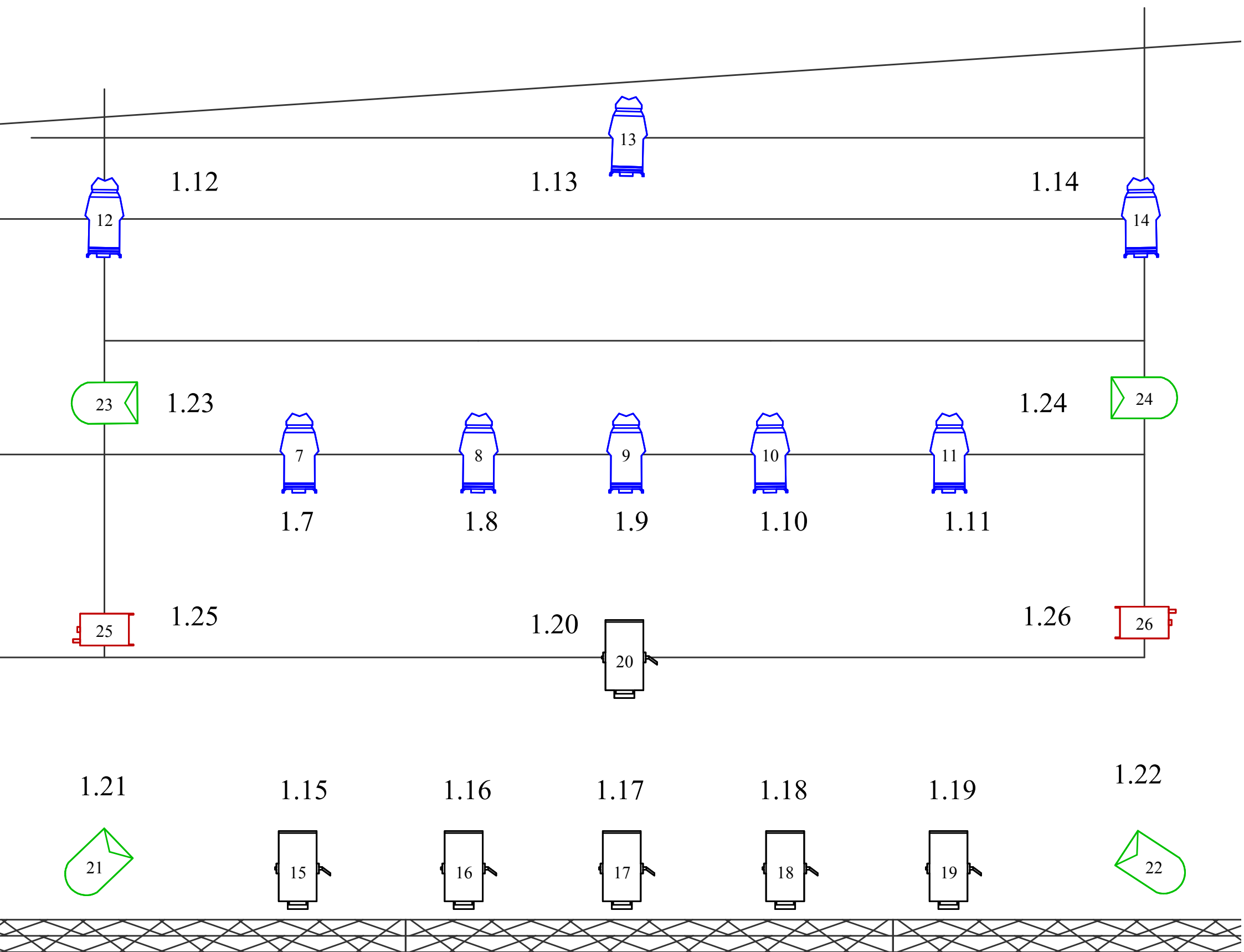


2 x Generic Strobe 2 ch (FLOOR)



4 x BRITEQ COB-Blinder 2 x 100w 4 ch (RIG)





HAZER: Look - Unique @ 2.510

HouseLights @ 1;512

6 x Spare Dimmer @ 1.1 > 1.6

CONTROL:

M.A. DOT 2

and / or

ChamSys MQ 40 N