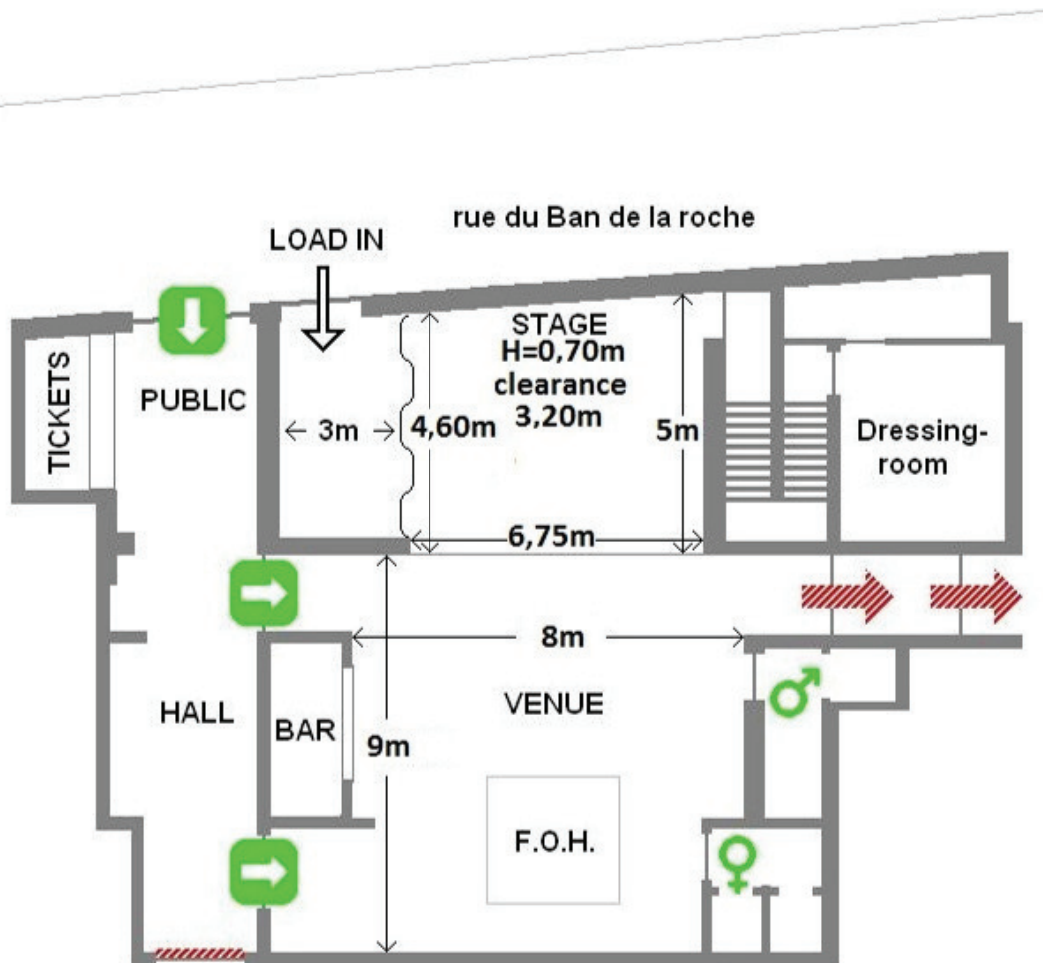


LAITERIE - CLUB

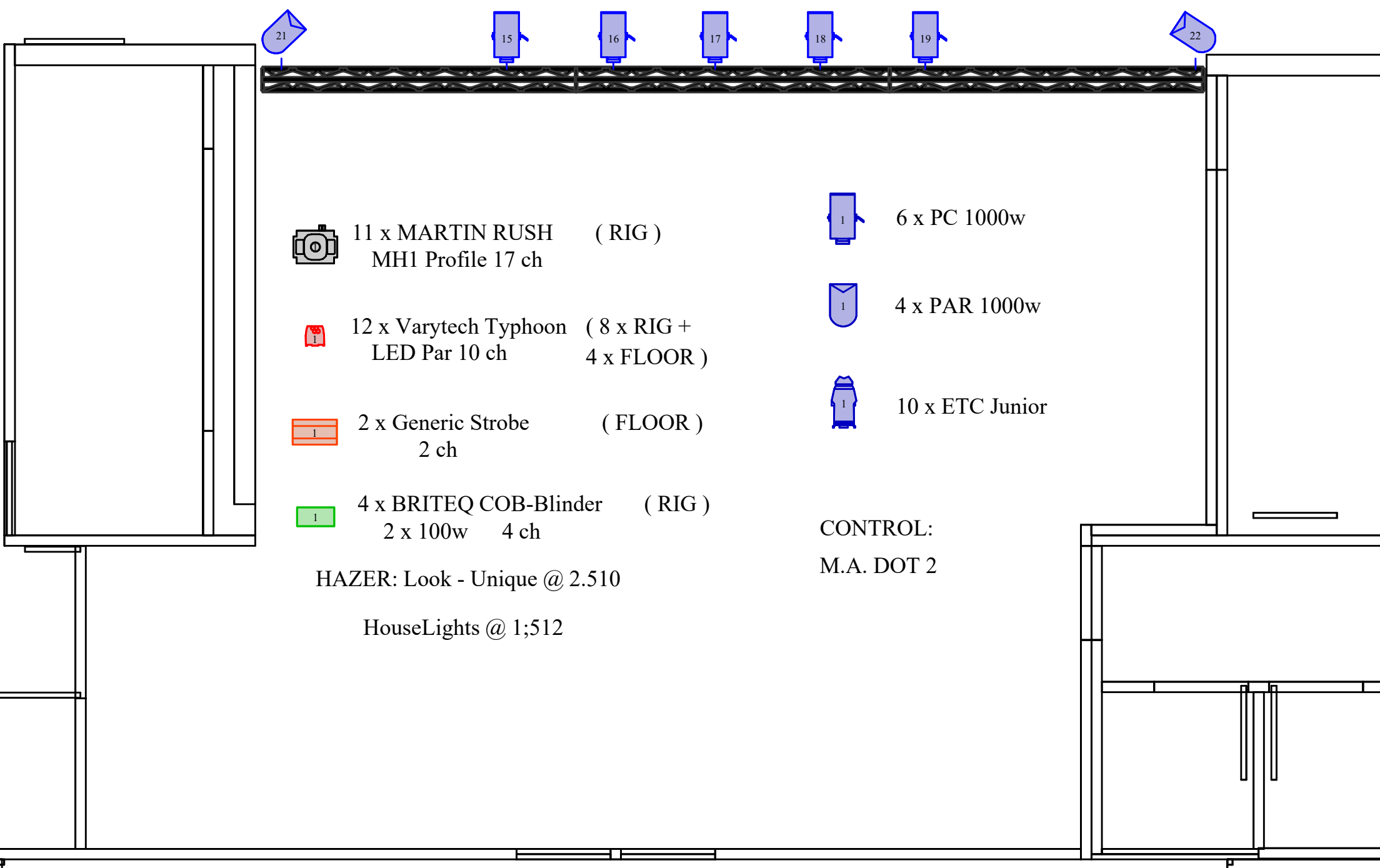
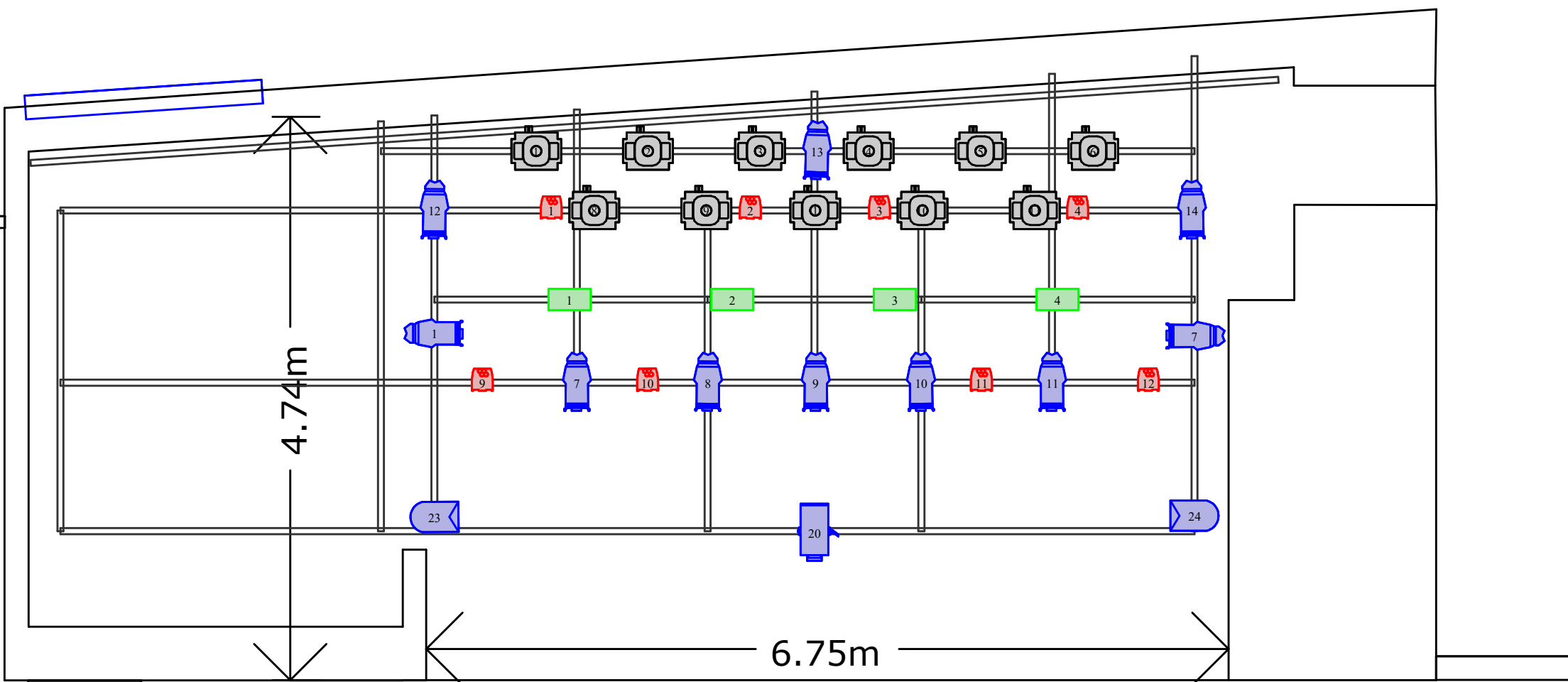
artefact pri

Strasbourg

<https://www.artefact.org/>

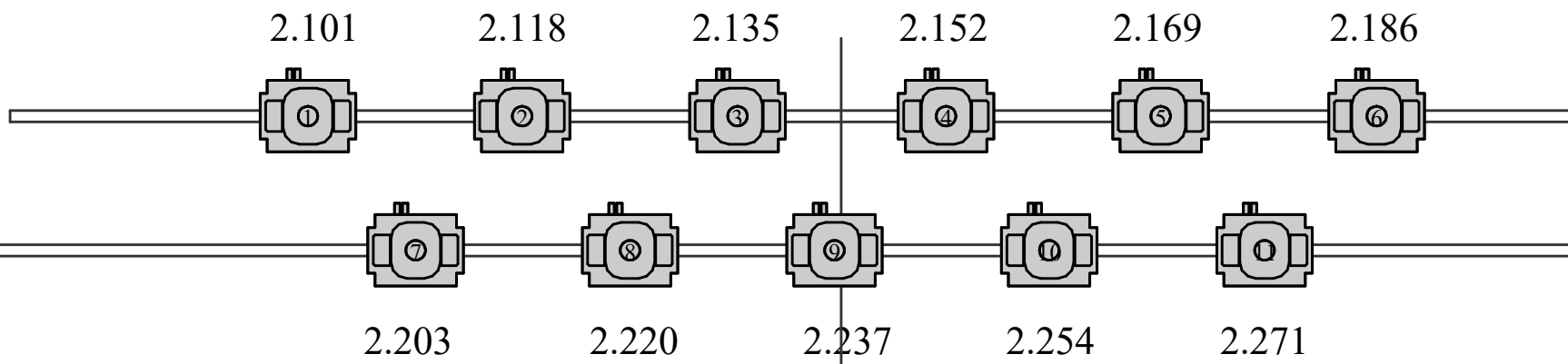


LAITERIE Lights - CLUB - Strasbourg



LAITERIE Lights - CLUB - Automated Patch

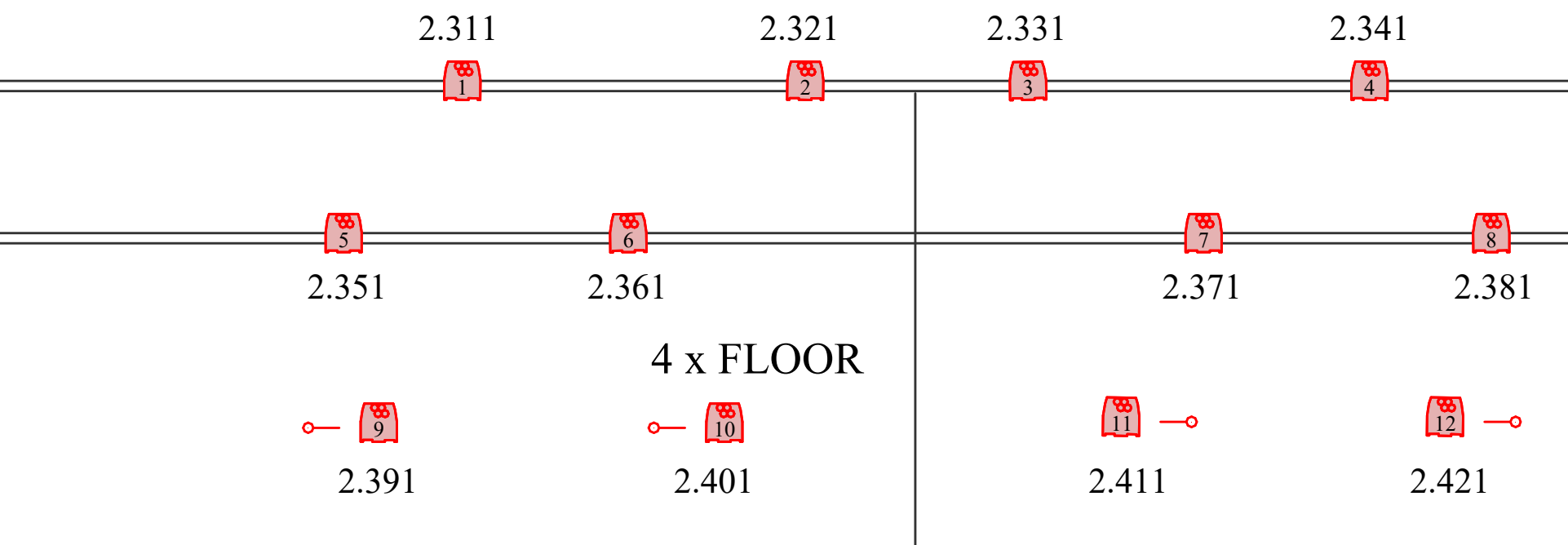
11 x MARTIN RUSH MH1 Profile 17 ch (RIG)



4 x BRITEQ COB-Blinder 2 x 100w 4 ch (RIG)



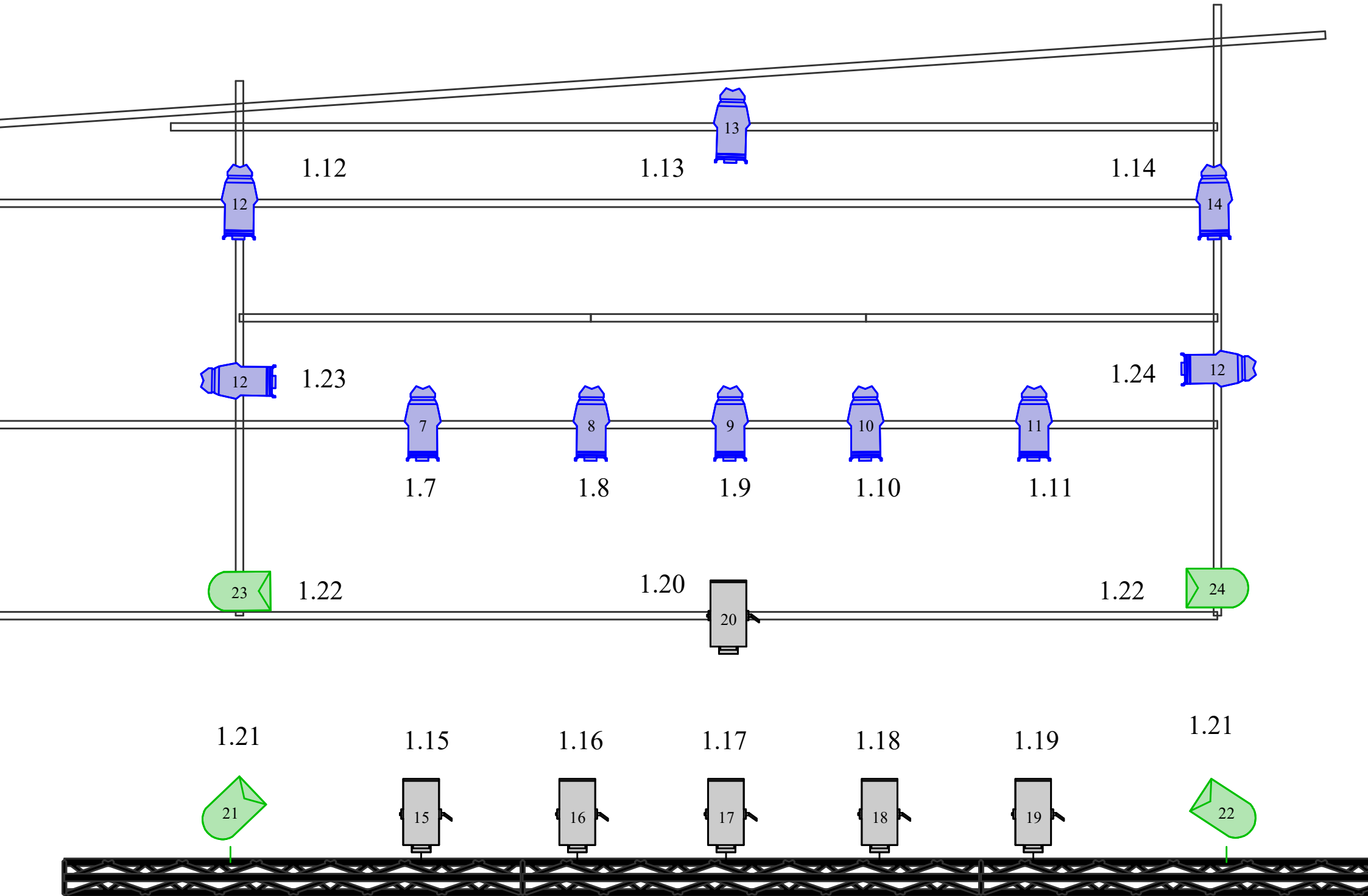
12 x Varytech Typhoon LED Par 10 ch 8 x RIG



2 x Generic Strobe 2 ch (FLOOR)



LAITERIE Lights - CLUB - Conv. Patch



HAZER: Look - Unique @ 2.510

HouseLights @ 1;512

CONTROL:

M.A. DOT 2